



ALL-PURPOSE TRUCK BODIES



Omaha Standard has engineered and built the toughest all-purpose body on the market. The "Badger" is ideal for gooseneck hauling and rugged enough to withstand heavy day-in and day-out use. These attractive light-weight bodies offer you the best value available today for your 1/2, 3/4 or 1-ton chassis.



All Omaha Standard "Badgers" are topcoat e-coated to make them more durable and corrosion resistant giving you more value for your money.

Optional bulkhead work lights and underbody toolbox shown.

The Badger Body is also available in an aluminum version.

"BADGER" FEATURES

- 4" structural channel long members (6" optional).
- 4³/₁₆" 12-gauge high strength steel channel cross members.
- Heavy-duty rectangular contoured tube single sheet bulkhead is welded to platform. Stylish laser profiled window is standard.
- Heavy-duty 1/4" x 2" banding rail to secure cargo.
- 1/8" thick treadplate steel floor and reinforced rear apron with three-light cluster and corner lights.
- FMVSS compliant clearance lights and reflectors. Wiring in loom harness.
- Center high mounted stop light (CHMSL).
- Stake pockets accommodate 2 x 4 lumber.
- Painted with a high gloss black acrylic electrocoat topcoat over a zinc phosphate precoat for maximum durability and rust resistance.
- 3-yr./36,000 mile limited warranty.

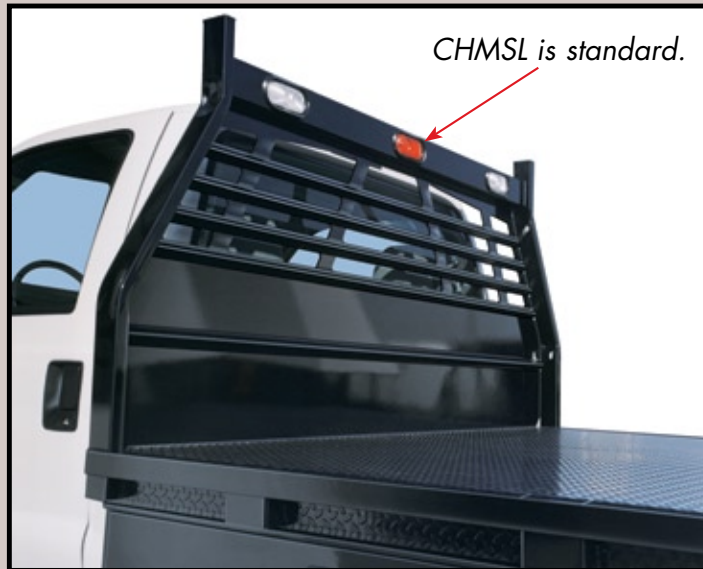
MODEL	LENGTH	WIDTH	C.A.	APPROXIMATE WEIGHT
B8N	8'2"	82"	54"-60"	578 lbs.
B8W	8'2"	96"	60"	628 lbs.
B9N	9'	82"	60"	674 lbs.
B9W	9'	96"	60"	729 lbs.
B10W	10'	96"	84"	797 lbs.
B11W	11'	96"	84"	866 lbs.
B12W	12'	96"	84"	986 lbs.
B14W	14'	96"	108"	1,165 lbs.
B16W	16'	96"	120"	1,354 lbs.

Omaha Standard reserves the right to modify, change or revise published specifications and furnish products so altered without prior notice.

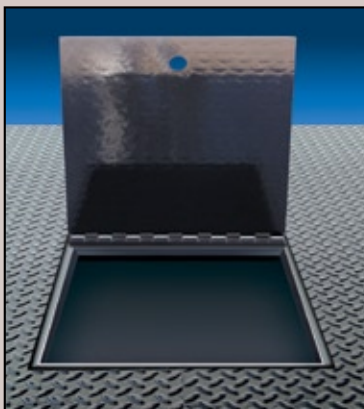
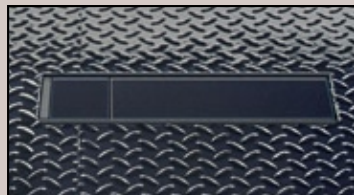
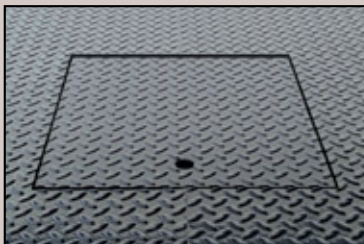


ALL-PURPOSE TRUCK BODIES

Optional Equipment



- Recessed rubber mounted work lights in bulkhead.



- Pop-up ball for quick hook ups, folds away in seconds.
- Gooseneck style hinged door, flush mounted. 8" structural channel drawbar included.
- Rear stake pockets and banding rail.
- Angled ICC step bumper.
- Omaha "Strongbox" underbody toolboxes.



We Create Value...



3501 South 11th Street ■ Council Bluffs, Iowa 51501 U.S.A.
Phone 712-328-7444 ■ 800-279-2201 ■ Fax 800-568-7444
www.omahastd.com ■ e-mail: os@omahastd.com

In the interest of product improvement, Omaha Standard Inc. reserves the right to modify, change or revise design and specifications and furnish product so altered without prior notice.

BAPB 0706



SOLD BY:



28130 Groesbeck Hwy
Roseville, MI 48066
(586) 774-4900 Fax: (586) 772-1280
www.nbctruckequip.com